



# VILLA

The Villa offers a 'New England' look with attractive and practical PVCu sash windows and shutters. It is spacious, well designed accommodation without compromise.

Standard Features include

- 16 degree pitched tiled roof with overhang
- Sash 'look' PVCu double glazed windows and doors.
- PVCu exterior shutters
- Full central heating with living flame effect electric fire
- Individually papered walls
- Siltex ceilings with 100mm coving
- Picture rail to lounge/diner
- Breakfast bar with two stools
- White 6 panel doors with brass effect furniture
- Fitted kitchen with cornice
- Full interior lighting pack
- Available 22'3"/6.8m wide



  
**NEILSHILL PARK**  
DUTCH HOUSE CARAVAN PARKS LTD

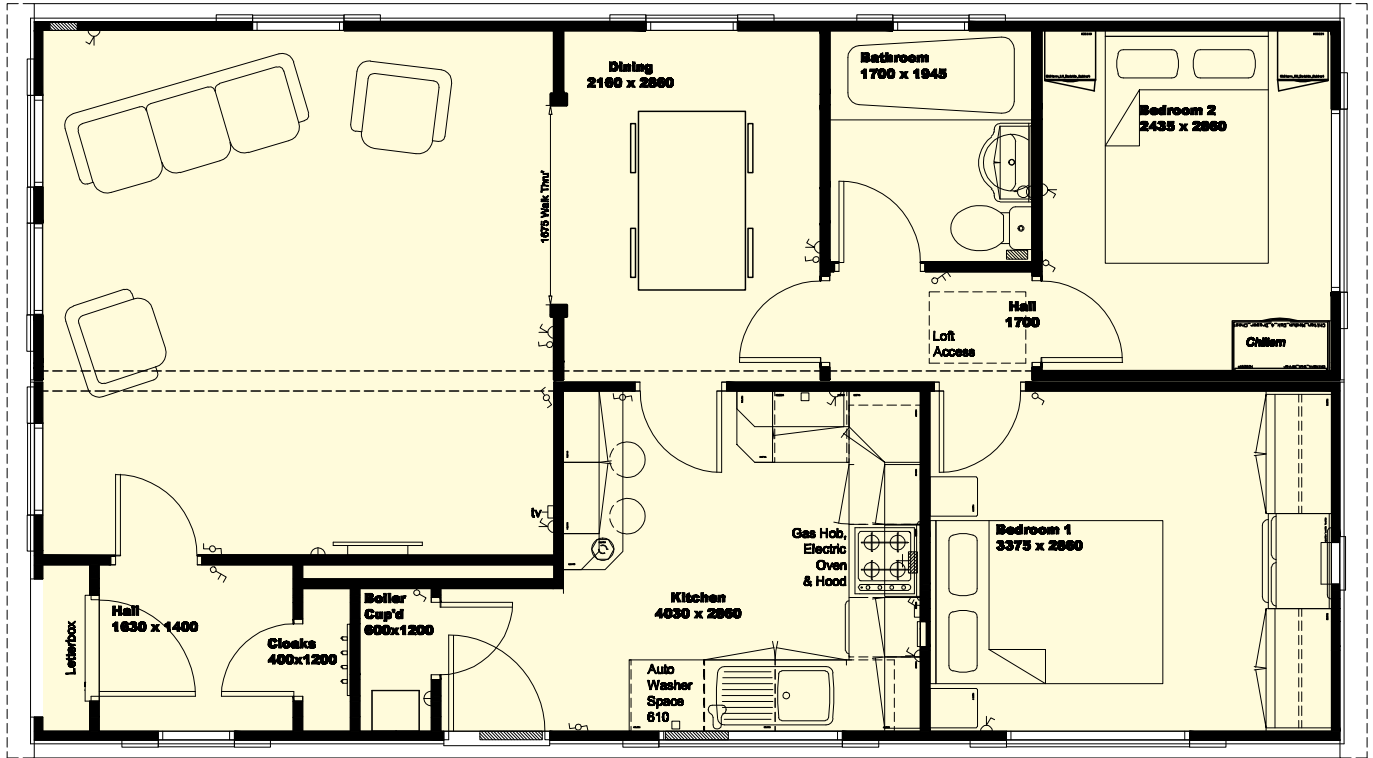
Neilshill House, Neilshill Park, by Ayr KA6 5AU

Tel/Fax: 01292 520202

[www.neilshillpark.co.uk](http://www.neilshillpark.co.uk)

*The following items shown in the photographs are optional extras:- Conservatory, coffee table*

# VILLA



Neilshill Park is just a few miles from the county town of Ayr, with its excellent shopping centre, and an excellent choice of Supermarkets, Department Stores, High Street and Independent retailers.

Nearby Prestwick International Airport has links to London Standstedt, Belfast, Dublin, Paris, Rome and a host of other European destinations.

For golfers, it's only a short drive to the Open courses of Royal Troon, Turnberry, Prestwick, and there is a wide choice of other golf clubs and municipal courses.

It's only a couple of miles to Ayr Racecourse, Scotland's premier racecourse, home of the Scottish Grand National and Ayr Gold Cup Festival.

Neilshill Park is in the heart of Burns Country, only a few miles from Rabbie's birthplace in Alloway, the Bachelors' Club, and his farm at Mossgeil.

Bowling enthusiasts will find a host of clubs nearby, and all weather indoor facilities in Ayr and Prestwick.

Fishing is a popular sport in Ayrshire, with several stretches available on the River Ayr, sea fishing, and loch fishing all close to your new home.

There are plenty of walks and cycle tracks in the area, with maps available from the Tourist Information Centre in Ayr.

Neilshill Park is the ideal location for the retired or semi-retired. You will live in an idyllic country setting, with plenty of activities on your doorstep - what more could you ask for?

